



Fixture shown with optional cable kit. (sold separately)

ABOUT THE PRODUCT

From the award-winning Essentials family of LED fixtures, the *Performance Line* delivers superior performance, quality and versatility for high bay applications. With up to 155 lm/W efficacy and up to 70% lower power consumption compared to traditional fluorescent and HID light sources, these fixtures from Flextronics Lighting Solutions are designed to lower your total cost of ownership (TCO). Dedicated heat sinks ensure superior performance and extended useful life.

INTENDED USE

Manufacturing, Aircraft Hangars, Warehouses, Convention Centers and Other Large Indoor Spaces		
Target Mounting Heights	Comparable Traditional Light Source	Reduction in Power Consumption over Traditional Light Source
20-40 Feet (6-12m)	8-Lamp T5HO or 750W Metal Halide	45-67%

FIXTURE PERFORMANCE

	WATTAGE ¹	LUMENS ¹	EFFICACY ¹	CRI ²
CA - CLEAR LENS				
4000K, LV	256	36,566	143	80
4000K, HV	257	37,257	145	80
5000K, LV	260	40,140	152	80
5000K, HV	257	40,140	156	80
FP - FROSTED LENS				
4000K, LV	256	33,232	130	80
4000K, HV	257	33,860	132	80
5000K, LV	258	36,480	142	80
5000K, HV	258	36,480	142	80

¹ Typical at 120V and 77°F (25°C). ² Typical CRI.

DIMENSIONS

in (cm) • lb (kg)

LENGTH ¹	WIDTH ¹	DEPTH ¹	WEIGHT	WEIGHT WITH BATTERY BACK-UP
43-5/8 (110.8)	18-3/4 (47.6)	2-1/4 (5.7)	18 (8.1)	28 (12.7)

¹ Dimensions listed are for the fixture only. See dimensional drawings for measurements with mounting hardware.

TOTAL HARMONIC DISTORTION

	LV	HV
120V	5.1%	8.1%
277V	11.6%	9.7%
347V	5.1%	8.1%
480V	11.6%	9.7%

POWER FACTOR

	LV	HV
120V	1.00	0.99
277V	0.95	0.98
347V	1.00	0.99
480V	0.95	0.98

FEATURES & SPECIFICATIONS

POWER AND CONTROL

- **POWER INPUT:** 120-480V (50/60Hz)
- **DIMMING:** 0-10V dimming standard. Capable of dimming down to 10%.
- **OCCUPANCY SENSORS:** Optional factory installed occupancy sensors are available. See accessories for ordering information.
- **EMERGENCY BATTERY BACK-UP (EMB):** Ordered separately as optional accessory, EMB is available, producing 2000-2200 lumens for a minimum of 90 minutes. Fixtures are manufactured EMB ready and EMB is installed in the field.

LUMEN MAINTENANCE

- **L70 LIFE:** 95% lumen maintenance at 60,000 hours (77°F/25°C ambient); L70 predicted life is more than 200,000 hours.

FIXTURE

- **ENVIRONMENT:** Dry/Damp. For interior applications (IP30).
- **HEAT SINKS:** Extruded aluminum heat sinks provide optimal thermal management, decreasing LED junction temperature and ensuring long life.
- **POWER SUPPLY ACCESS:** Center channel cover is hinged for easy access to power supplies and quick wiring.
- **MOUNTING:** Fixture is cable ready and has a center opening to accept a 3/4" stem mount. Cable, stem or surface mount options.
- **LENSES:** UV stable clear or frosted polymeric material. Consult chemical resistance chart for guidance in selecting appropriate lens for your application.
- **WIRE GUARDS:** Optional wire guards can be field installed. See accessories for ordering information.
- **WARRANTY:** Limited 5-year warranty.
- **AMBIENT OPERATING TEMPERATURES:** (Refer to ordering guide.)
CRM and HOOK fixtures: -41° to 131°F (-40° to 55°C)
MBR and EMB fixtures: -31° to 122°F (-35° to 50°C)
 (Temperatures below -20 °C have limited switch cycles. Consult factory for details.)

LISTINGS AND CERTIFICATIONS

- UL | cUL listed for safety (UL 1598)
- UL | cUL dry/damp location listed
- UL | CSA UL 1598 and CSA C22.2 No. 250.0
- FCC Class B
- U.S. Department of Energy Lighting Facts Partner
- DesignLights™ Consortium Approved



ORDERING EXAMPLE:

ES3P-UL-6M-50-WIDE-CA-LV-CRM-10V-OCCN-CORDN-EMBN

ES3P	UL	6M		WIDE	
SERIES	COMPLIANCE	MODEL	COLOR TEMP	DISTRIBUTION	LENS
ES3P Essentials Series - Performance Line	UL UL Listed	6M 6 Modules	40 4000K 50 5000K	WIDE Wide Distribution	CA Clear Acrylic Lens FP Frosted Polycarbonate Lens
		10V			
VOLTAGE	MOUNTING	DIMMING	OCC SENSORS	CORD & PLUG	BATTERY BACK-UP
LV 120-277V HV 347-380V	CRM⁶ Cable-ready (standard) and has center opening to accept a 3/4" stem. MBR¹ Field installed mounting kit, including fixture mounting box and bracket for surface mount applications HOOK¹ Field installed mounting kit, including fixture mounting box with hook, fixture mounting bracket, and one pair of leveling cables. For hook/loop applications	10V 0-10V Interface (standard)	OCCN No Sensor (standard) OCC20^{1,2} Occ Sensor, on/off 20' Mounting Height OCC40^{1,2} Occ Sensor, on/off 40' Mounting Height OCCDIM20^{1,4,5} Occ Sensor, dimmable 20' Mounting Height OCCDIM40^{1,4,5} Occ Sensor, dimmable 40' Mounting Height DAINTR^{1,3,4,8,10} Fixture is factory-wired for easy integration of Daintree Wireless controls	CORDN No cord/plug (standard) C6W^{1,9} 6ft cord, 15A, no plug C15W^{1,9} 15ft cord, 15A, no plug C515^{1,9} 6ft cord, 15A, straight plug 120V (5-15P) CL515^{1,9} 6ft cord, 15A, locking plug 120V (L5-15P) CL715^{1,9} 6ft cord, 15A, locking plug 277V (L7-15P) CL720^{1,9} 6ft cord, 20A, locking plug 277V (L7-20P) CL2420^{1,9} 6ft cord, 20A, locking plug 347V (L24-20P) CL820^{1,9} 6ft cord, 20A, locking plug 480V (L8-20P)	EMBN No emergency battery back-up (standard) EMBR^{1,4,7,10} Fixture is <i>EMB-Ready</i> , with test button, indicator lamp and wiring harness factory installed

¹Optional add-on. See price list for pricing.

²Optional add-on for 120-277V only. High voltage options available as special order with longer lead time.

Contact factory for pricing and lead time.

³Daintree options do not include Daintree ControlScope Software™, wireless connection hardware/infrastructures, or field commissioning.

Consult Daintree for more information and ordering assistance.

⁴Optional add-on available in 120-277V only.

⁵Wireless programmer required for final field setup. See ACCESSORIES.

⁶Optional CABLEKIT ordered separately. See ACCESSORIES.

⁷Field installed EMB KIT must be ordered with this option. See ACCESSORIES.

⁸Field installed Daintree-Wireless Control kit must be ordered with this option. See ACCESSORIES.

⁹All cords are 16/3 AWG, 600V, and white.

¹⁰Consult factory for orders requiring DAINTR and EMBR.

ACCESSORIES: Must be ordered separately. Packaged separately.

Type	Part Number	Description
CABLE KIT	CABLEKIT	Kit includes 10 ft Gripple aircraft "Y" cables and snap hooks (one pair).
SAFETY CABLE	SAFETYCABLE	Kit includes (one) 5 ft Gripple aircraft cable with single snap hook.
WIRELESS PROGRAMMER FOR DIMMABLE OCCUPANCY SENSOR(S)	OCCDIMPROG	Handheld wireless programmer for setup OCCDIMXX dimmable occupancy sensors. Required with OCCDIM20 and OCCDIM40 selection.
DAINTREE WIRELESS CONTROL KITS	ES3-DAINT ES3-DAINTOCC	Kit includes Daintree Wireless Fixture Adapter, wiring harness and screws. Kit includes Daintree Wireless Controller with integral occupancy sensor and (2) lens options (20' or 40' ceiling height).
WIREGUARDS	ES3-WG-XX	Wire guard protects LED modules from impact. Kit includes mounting hardware. XX = Indicate fixture model (Ex. 2MS, 2M, 4MS, 4M, 6MS, 6M).
REPLACEMENT POWER SUPPLY	ES3-PS-UL-LV-75W ES3-PS-UL-LV-150W ES3-PS-UL-HV-75W ES3-PS-UL-HV-150W	Field replaceable power supply, 120/277V, 75W, for 2MS model only. Field replaceable power supply, 120/277V, 150W, for 2M, 4M, 4MS, 6M, and 6MS models. Field replaceable power supply, 347/480V, 75W, for 2MS model only. Field replaceable power supply, 347/480V, 150W, for 2M, 4M, 4MS, 6M, and 6MS models.
EMERGENCY BATTERY BACKUP KIT	ES3-EMBLV	Emergency battery backup suitable for a minimum 90 minutes of emergency operation, when normal power is unexpectedly interrupted. Required with "EMBR" selection.

CLEAR ACRYLIC LENS

DESCRIPTION

Wide distribution maximizes spacing, provides high uniformity and LED protection. Typically used for mounting heights of 20-40 feet (6-12m).

FIXTURE DATA

Part Number: ES3P-UL-6M-50-WIDE-CA

CCT: 5000K, LV

Fixture Lumen Output: 40,140 lm

Fixture Wattage: 260W

Fixture Efficacy Rating: 154lm/W

Spacing Criteria

Diagonal	1.44		
Lateral Plane	0°-180°	90°-270°	
	1.30	1.34	

CCT LIGHT OUTPUT CONVERSIONS

4000K, LV: 0.911
4000K, HV: 0.928
5000K, LV: 1.000
5000K, HV: 1.000

Test date: 29-JANUARY-2015
Tests done in accordance with LM79. Consult factory for LM79 and IES files.

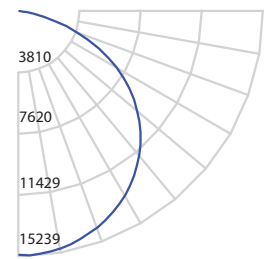
ZONAL LUMEN SUMMARY

ZONE	LUMENS	% FIXTURE
0° - 30°	12014	30%
0° - 40°	19954	50%
0° - 60°	35133	88%
0° - 90°	40140	100%
0° - 180°	40140	100%

CANDELA DISTRIBUTION ARRAY

	0°	45°	90°
0°	15220	15220	15220
10°	15024	14979	14985
20°	14338	14351	14370
30°	13235	13325	13567
40°	11684	12040	11698
50°	9629	9653	9168
60°	7003	6484	2945
70°	3872	1336	882
80°	985	289	334
90°	0	0	0

CANDELA PLOT



COEFFICIENTS OF UTILIZATION

RC	80				70				50				30				10				0			
	RW	70	50	30	10	70	50	30	10	50	30	10	50	30	10	50	30	10	0	0	0	0		
0	119	119	119	119	116	116	116	116	111	111	111	111	106	106	106	102	102	102	100	100	100	100		
1	110	106	102	99	108	104	100	97	100	97	94	96	94	91	92	90	89	87	87	87	87	87		
2	101	94	88	82	99	92	86	81	88	84	80	85	81	78	82	79	76	74	74	74	74	74		
3	93	83	75	69	90	81	74	69	78	73	68	76	71	66	73	69	65	63	63	63	63	63		
4	85	74	66	59	83	73	65	59	70	63	58	68	62	57	66	61	57	55	55	55	55	55		
5	78	66	58	51	76	65	57	51	63	56	50	61	55	50	59	54	49	47	47	47	47	47		
6	72	60	51	45	71	59	51	45	57	50	44	55	49	44	54	48	44	42	42	42	42	42		
7	67	54	46	40	65	53	45	40	52	45	39	50	44	39	49	43	39	37	37	37	37	37		
8	62	49	41	35	61	49	41	35	47	40	35	46	40	35	45	39	35	33	33	33	33	33		
9	58	45	37	32	57	45	37	32	44	37	32	42	36	31	41	36	31	29	29	29	29	29		
10	55	42	34	29	53	41	34	29	40	33	29	39	33	29	38	33	28	27	27	27	27	27		

RCR=Room Cavity Ratio RC=Effective Ceiling Cavity Reflectance RW=Wall Reflectance Effective Floor Cavity Reflectance = 20%

FROSTED POLYCARBONATE LENS

DESCRIPTION

Semi-diffused frosted lens provides glare control and LED protection. Typically used for mounting heights of 20-40 feet (6-12m).

FIXTURE DATA

Part Number: ES3P-UL-6M-50-WIDE-FP

CCT: 5000K, LV

Fixture Lumen Output: 36,480 lm

Fixture Wattage: 258W

Fixture Efficacy Rating: 142 lm/W

Spacing Criteria

Diagonal	1.36		
Lateral Plane	0°-180°	90°-270°	
	1.24	1.26	

CCT LIGHT OUTPUT CONVERSIONS

4000K, LV: 0.911
4000K, HV: 0.928
5000K, LV: 1.000
5000K, HV: 1.000

Test date: 29-JANUARY-2015
Tests done in accordance with LM79. Consult factory for LM79 and IES files.

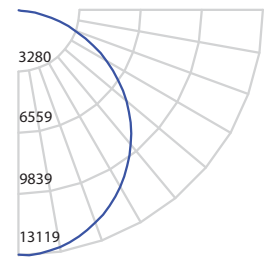
ZONAL LUMEN SUMMARY

ZONE	LUMENS	% FIXTURE
0° - 30°	10085	28%
0° - 40°	16460	45%
0° - 60°	28936	79%
0° - 90°	36480	100%
0° - 180°	36480	100%

CANDELA DISTRIBUTION ARRAY

	0°	45°	90°
0°	13096	13096	13096
10°	12800	12802	12868
20°	12043	12038	12090
30°	10920	10911	10930
40°	9393	9373	9365
50°	7599	7589	7561
60°	5576	5566	5513
70°	3425	3404	3343
80°	1391	1360	1331
90°	0	0	0

CANDELA PLOT

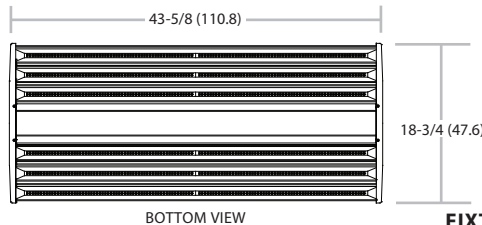


COEFFICIENTS OF UTILIZATION

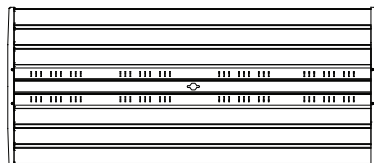
RC	80				70				50				30				10				0			
	RW	70	50	30	10	70	50	30	10	50	30	10	50	30	10	50	30	10	0	0	0	0		
0	119	119	119	119	116	116	116	116	111	111	111	111	106	106	106	102	102	102	100	100	100	100		
1	109	104	100	96	106	102	98	95	98	94	91	94	91	89	90	88	86	84	84	84	84	84		
2	99	91	84	78	96	89	83	77	85	80	75	82	78	74	79	75	72	70	70	70	70	70		
3	90	80	71	65	88	78	70	64	76	69	63	72	67	62	70	65	61	59	59	59	59	59		
4	83	71	62	55	80	69	61	55	67	60	54	64	58	53	62	57	52	50	50	50	50	50		
5	76	63	54	47	74	62	53	47	60	52	47	58	51	46	56	50	46	43	43	43	43	43		
6	70	57	48	41	68	56	47	41	54	46	41	52	46	40	51	45	40	38	38	38	38	38		
7	65	51	43	37	63	51	42	36	49	42	36	48	41	36	46	40	36	34	34	34	34	34		
8	60	47	38	33	59	46	38	32	45	38	32	44	37	32	42	36	32	30	30	30	30	30		
9	57	43	35	29	55	42	35	29	41	34	29	40	34	29	39	33	29	27	27	27	27	27		
10	53	40	32	27	52	39	32	26	38	31	26	37	31	26	36	30	26	24	24	24	24	24		

RCR=Room Cavity Ratio RC=Effective Ceiling Cavity Reflectance RW=Wall Reflectance Effective Floor Cavity Reflectance = 20%

DIMENSIONS: in (cm)



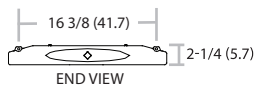
CABLE READY MOUNT (CRM)



TOP VIEW

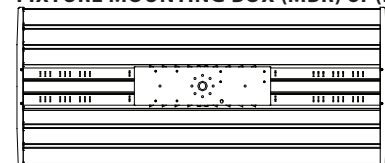


SIDE VIEW

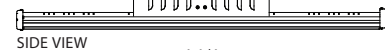


END VIEW

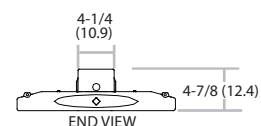
FIXTURE MOUNTING BOX (MBR) or (EMB)



TOP VIEW



SIDE VIEW



END VIEW